

michelle maartensz

Michelle Maartensz, a digital media artist was influenced by Reading Cinema. This site was chosen as Michelle was inspired by the role of the building, 'representing a community of all ages without discrimination'.

Michelle's previous work has looked at screen-based technologies, so the cinema building was a natural choice. Her research began with photographing the interior of the theatre, the projection room and the foyer area. The results and the progression of these images began to focus on the technical and abstracted mechanisms associated with the projection room. Michelle stated, 'the projection room is a mystery to most moviegoers and details of the room and its workings are fascinating with the huge mechanical spools and projector'.

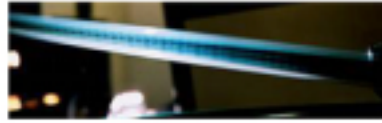
The photographic proofs were collated together, creating a screen-based composition, as well as enlarged poster sized images. The footage features connected to the mechanical elements of film traveling through a series of reels, noisily circulating, while transcending into the next frame of additional mechanical components. This is viewed as you enter the cinema, showcased in the foyer on a flat screen television.

The printed images are long and narrow, containing non-representative images of the projection machinery and the cinema interior. These are installed on the back of bathroom doors, aware that the misuse and treatment of the printed images will become defaced and torn.

The installation will attract attention from all who enter the site, drawing the viewer through each frame and sound.



Maitland Building Sites Project



Week 1 and 2

Choosing the Site

After spending a day wondering around Maitland and photographing various sites, the Cinema Complex was the site I decided upon. After looking through the preliminary photographs I formed some ideas for the work for the project.



With a concept for the works in mind I returned to the Cinema Complex to photograph both the Projection room and the theaters. Off site I needed to resolve technical requirements for the works and installation issues. A combination of still and moving images will be installed in the complex. The projection room will be the main focus of the photographs as this is a part of the building the general public don't get to see. The still photographs will be installed in the bathroom facilities and the moving images will be shown on a screen in the foyer.



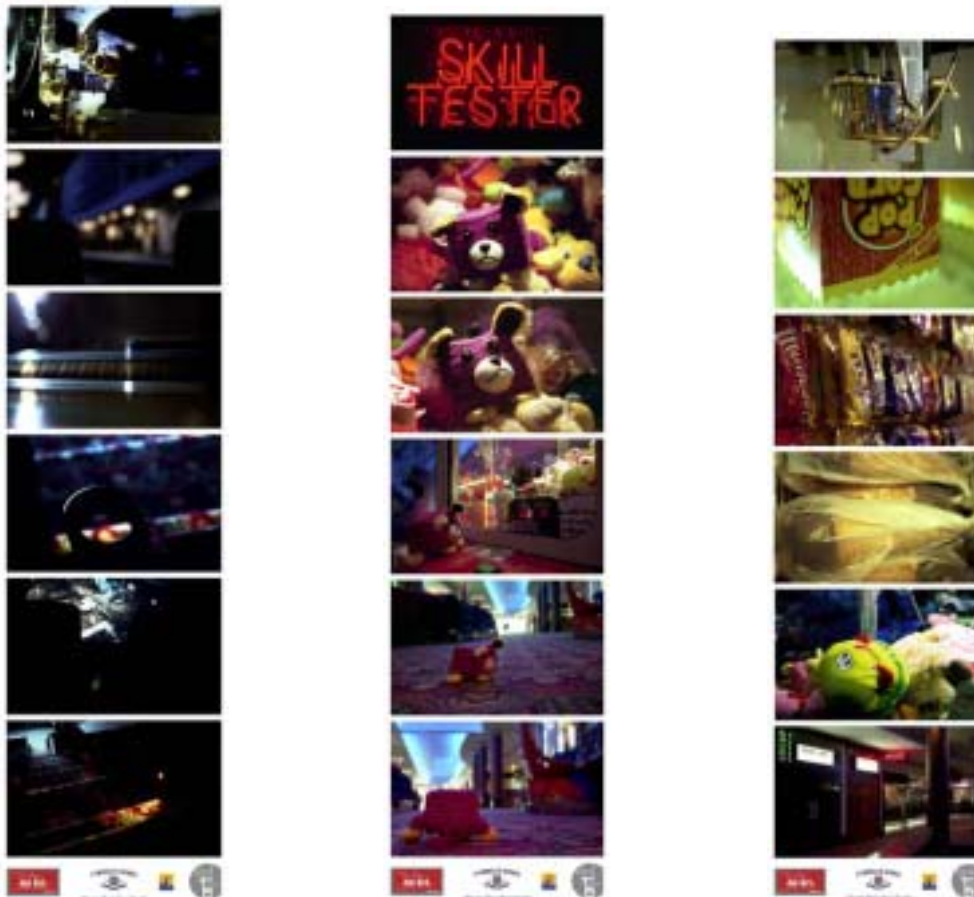
I have kept in mind the building itself and the experience of visiting the cinema in considering the proposed works. Sitting in the vast darkness the film transports the viewers into the stories being conveyed in light and sound. The emersive nature of the cinema experience is what I hope to capture in some of the works along with the mechanical reality of how the film is projected onto the screen.



Michelle Maartensz

Week 3 & 4

My motivations behind the images, reflect the various reasons people come to the movies, some people like the popcorn, others prefer the choc-top cones. The cinema is a place where all your emotions are played with throughout the film; some are silly and fun, while others are dark and scary. These elements are portrayed throughout my images - dark hidden areas, big open spaces, confined dark corners, artificial display lights, games and toys and the mechanical elements.



These images will be placed on the back of the toilet doors (ladies) and above the male urinals. I am expecting them to be de-faced, torn and also to be stolen.

Michelle Maartensz

Documentation provided by Michelle Maartensz