



mrag grand opening a huge success!

The art gallery is still recovering from what was a truly remarkable day. The date August 15 will be etched into the memories of all mrag staff as they remember the anticipation and exhaustion of the grand opening!!

It is estimated that 1500 people attended and enjoyed the day. The weather was very kind, delivering clear blue skies and unseasonably warm winter weather. Visitors were treated to scrumptious food by Mansfield Catering, street performances by Circus Avalon and a very entertaining speech by well known artist Margaret Olley AC.

When the gallery doors finally opened, the public streamed inside and enjoyed five stunning exhibitions featuring both Australian and international artists. Visitors also took pleasure in browsing the fabulous new gallery shop which made unprecedented sales.

August 15 2009 marks the beginning of a new cultural chapter for Maitland and the Hunter.



meet our new chairperson judy henry

Judy has been involved with the art gallery for a number of years and I am sure most of you already know her. Judy is responsible for the fantastic looking new gallery shop at mrag, and if you have been on an mragm coach trip to Sydney to see Sculpture by the Sea or the Archibald exhibition, you will certainly recognise Judy. Speaking of bus trips the next Sculpture by the Sea trip is coming up on November 7, further information is below.

Judy is thrilled to be the new Chairperson of MRAGM and is looking forward to her new role. She is looking forward to helping the gallery promote education programs, exhibitions and events. MRAGM helps the art gallery by fundraising with the focus on support for education programs. Social events, raffles, coach trips to art galleries, art workshops etc run by the members are ways that Members can raise the much needed funds for MRAG Education and other MRAG projects. The community (as well as the Members) can access these activities run by MRAGM. So Judy urges you to take part in the great activities organised by the committee. You will be helping the art gallery and having great fun at the same time!!



mragm sculpture by the sea coach trip

itinerary saturday 7 november 2009

- | | |
|------------------------|---|
| 7:00am sharp | depart maitland regional art gallery |
| 7:30am | depart bluetongue brewery with the novocastrians
42 stenhouse drive, cameron park
convenience stop – includes free morning tea |
| 10:30am | studio visit: arrive at the studio of artist salvatore zofrea where he will present a talk on his work. |
| 12:00 noon | lunch at bondi:
byo or buy from a selection of cafes on the seafront. |
| 1:00pm – 4:00pm | sculpture by the sea: explore the sculptures from bondi pavilion to tamarama at your own leisure (takes 2½ - 3 hours to view sculptures from over 100 australian and international artists). |
| 4:00pm | meet the bus at tamarama bus stop above the surf club |
| 6:00pm | drop off the novocastrians at the blue tongue brewery |
| 6:30pm | return to maitland regional art gallery |

cost

\$60.00 members | \$75.00 non members or (guests). remember to bring your stash of \$1 & \$2 coins for the raffles on the bus. there are some great prizes to be won!!

rsvp

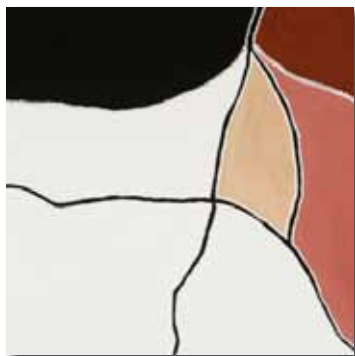
sunday 1 november 2009 bookings are essential. please phone mrag on (02) 4934 9859. full payment must be made to receive your ticket.



mark witherspoon (nsw) *television within, television without (detail)* cast recycled television glass, stainless steel, 310 x 120 x 70cm

currently on exhibition

- *Different Tracks*: The Agapitos/Wilson Collection of Contemporary Aboriginal Art The Agapitos/Wilson Annual until 22 november
- *Intangible Collection*: Fiona Davies Annual exhibition sponsored by Farrow Wyatt Chartered Accountants until 22 november
- *Off the Leash*: Jon Pryer a children's art + play installation in the art factory until 15 november



Freddy Timms
New Lisedell 2004
natural earth pigments and
binder on linen
132.3 x 132.3 cm



Jon Pryer *The Dog* (detail) 2009
cardboard, fibreglass
dimensions variable



Corrie Wright *in your dreams...the dress
maker will draft a different pattern* (detail)
mixed poli-carbon plastic, paper, mono
prints 220mm x 220mm x 140mm

next opening

6:00pm friday 23 october 2009

by Euan Macleod

- *Susan O'Doherty: 900 Eyes*
- *Max Miller and Barry Gazzard: Corner Country*

until 6 December

6:00pm friday 27 November 2009

- *Giselle Penn and Michael Garth: Spanning the Void*
- *Camille Kersley: of trees and love*
- *In Your Dreams*
- *Antarctica: A Place In The Wilderness*



Susan O'Doherty,
Margaret Olley 2006
acrylic on canvas 40 x 28cm.



Barry Gazzard
From Above 2009
oils and mixed media 84 x 107cm.



Max Miller
Muttawingee Sacred Area 2004
oil on linen 51 x 66cm.

time capture

Maitland eagerly awaited the opening of Lara O'Reilly's *Time Capture*. This work has been a year in the making, and was unveiled on Saturday 19 September by Her Excellency Professor Marie Bashir AC CVO Governor Of New South Wales.

The art work is a silent visual display running on random for a forecast twenty five years. Each of the participants are featured in the work which is run on random selection. The work runs at a mesmerizing relaxing speed which is quite addictive. Lara wanted to capture Maitland's female population and show it to future generations. For those participants who are still in Maitland as the years go by, they will marvel at how young they once were. For visitors now, it shows a great variant in what Maitland women look like. For future visitors it is hoped they will enjoy such an extravagant artistic history lesson.



Time Capture is a reflection and celebration of the diversity of women in Maitland, it was filmed on location in 2008 and is embedded within the newly built fabric of Maitland Regional Art Gallery. A filmic memory, Time Capture will slowly reveal the lives of 100 Maitland women until the year 2034. Lara O'Reilly

the gallery shop

open tuesday - sunday
10:00am - 5:00pm



The gallery shop is selling beautiful hand made jewellery, glassware, ceramics, woodwork, cards, bags, small sculptures and children's gifts, all made by Australian and local artists. We also stock unusual antiquities and have a fantastic range of children's books. There are some great buys for Christmas and lay-by's are now available. if you have a difficult person to buy for this christmas, why not give them a gallery shop gift certificate.



featured gallery shop artist robyn nunan

Robyn Nunan is a practicing artist based in Newcastle. Robyn creates jewellery out of bottle tops that she collects from car parks as well as those received by donations from friends, family and sometimes kind strangers.

The original jewellery created from recycled bottle tops, are wearable artworks that are unique, decorative fashionable items. The bottle tops feature a collage image that is used in designs of necklaces, brooches and rings.



left to right: champagne flutes by Julio Santos, ceramic Buddah, Hoglund Glass, bag by Gail Goddard

members and volunteers christmas party 6pm - 8pm monday 7 december 2009

Christmas is fast approaching and we are planning a great get-together for our members and volunteers. As a way of meeting like minded people we invite you, our members and volunteers to a free Christmas party.

The gathering will be catered for with food, wine and music. We will spice up the night by auctioning some treasures and hopefully raising some much needed funds for our beloved gallery. The party will kick off at 6pm and we'll quickly get into the excitement of the auction to make the best of our two hours. Put on your glad rags, bring your cheque book, and enjoy the atmosphere and fun of the night.



mrag members and volunteers christmas party

- when** monday 7 december 6:00pm - 8:00pm
- where** maitland regional art gallery
- who** for all mrag members and volunteers
- cost** FREE
- dress** smart casual
- rsvp** tuesday 1 december 2009
- please phone mrag on (02) 4934 9859.

there will be an **art auction** on the night so bring cheque book for the opportunity to purchase some stunning artwork just in time for christmas!!

mragm
maitland regional art gallery members

term 4 art events for kids and teens...

pipsqueak! for little ones aged 2 - 6 and their parents or carers

cost: \$5 per class.

multiple bookings discount: 6 visits for \$20 (purchased as a stamp card which can be used across many sessions, and for multiple children if necessary.) all materials supplied.

about: pipsqueak is an early childhood creative program that aims to encourage parents and caregivers to work together with their child creating cute and quirky art projects inspired by artworks from the mrag collection or artworks in current exhibitions.

location: mrag workshop rooms

term 4 dates and times: pipsqueak! runs fortnightly on wednesdays during school term, 11:00am -12:00pm

class dates: 21 october, 4 november, 18 november, 2 december, 16 december.

note: please book for each individual event you would like to attend.

art tuesdays for kids aged 6-12

cost: \$96 members / \$144 non-members all materials supplied.

about: art tuesdays pairs creative kids with professional materials and techniques. what we teach is inspired by the exhibitions around the gallery so children learn to investigate and respond to artworks individually, as well as make their own unique artworks. art tuesdays is a welcoming, social and educational get together for young kids.

location: mrag workshop rooms

term 4 dates and times. art tuesdays runs from 4:00 - 5:30pm on tuesday afternoons and runs for 8 weeks each school term.

first class: 27th october 2009

last class: 15th december 2009

art wednesdays for students aged 13-18

cost: \$110 gallery members / \$160 non members all materials supplied

about: art wednesdays is a studio art group designed for teens. each term, the students are introduced to a range of mediums and processes showcased across the exhibitions on display, with a strong focus on drawing skills. each term the art wednesday's sessions are facilitated by practicing fine arts teachers.

location: mrag workshop rooms

term 4 dates and times: art wednesdays runs from 4:00 – 5:30pm on wednesday afternoons and runs for 8 weeks each school term.

first class: 28th october 2009

last class: 16th december 2009



what's on in maitland

coming events in maitland

22 - 25 October

Paws A Plenty Art Exhibition
Morpeth Gallery,
5 Green St, Morpeth
T (02) 4933 1407
morpethgallery.com

24 October

Opera in the Vineyards
Wyndham Estate,
Dalwood Rd, Branxton
T (02) 4938 3444
wyndhamestate.com.au

25 October

Maitland City Choir
St Peter's, Banks St, East Maitland
T (02) 4933 9634

4 November

Hunter Student Fashion
Designer Awards
Maitland Gaol,
John St, East Maitland
T (02) 4936 6482
maitlandgaol.com.au

13 November 6.00 pm - 8.00 pm

Look Who's Talking - Di Morrissey
Monte Pio, Cnr New England Hwy
& Dwyer Ave, Maitland
T (02) 4933 6952
maitland.nsw.gov.au/library



coming events at grossman house

31 October

Lace Day with Barbara Ballantyne

11 November

Tivantansuyu Ensemble concert

mragm committee and meeting information

next mragm meeting

4.30pm monday 9 november 2009
@ the art gallery

chairpersonjudy henry
vice chairperson.....jeff sinclair
secretary.....gail witt
treasurer.....helen lowe
newsletter secretary.....lizz cooper
general committee member.....vicki woods
general committee member.....ruth trappel

mrag enquiries

maitland regional art gallery 230 high st | po box 220 maitland nsw 2320
ph (02) 4934 9859 | fax (02) 4933 1657 | email artgallery@maitland.nsw.gov.au | web www.mrag.org.au
art gallery and shop hours | tuesday - sunday 10:00am - 5:00pm

mragm

maitland regional art gallery members

the maitland regional art gallery members' (mragm) primary role is to promote public awareness of maitland regional art gallery (mrag) and its activities. mragm is recognised by the art gallery as a vital ingredient to the growth of the cultural precinct.

2010 meetings will be bimonthly, held on the second monday, of the month at 4.30pm. february 8, april 12, june 14, august, 9 october 11. the next agm is set for 18 october 2010.

mragm patron mr frank terenzini member for maitland in the nsw legislative assembly

